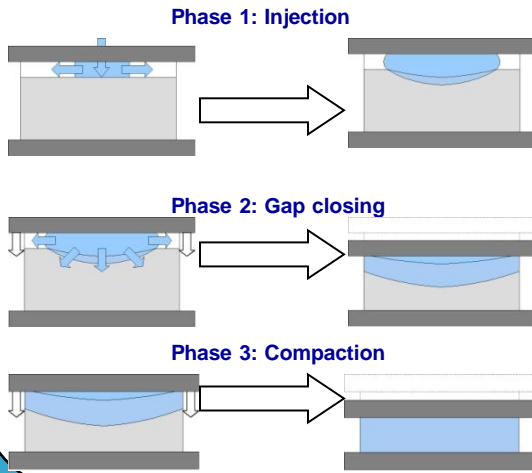


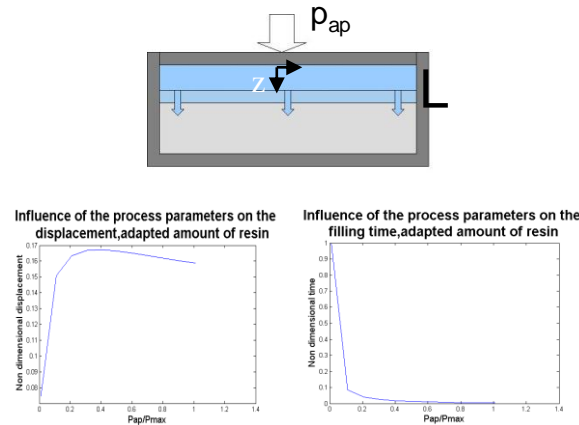
J. Merotte (MSME), S.G. Advani, and P. Simacek

University of Delaware . Center for Composite Materials . Department of Mechanical Engineering

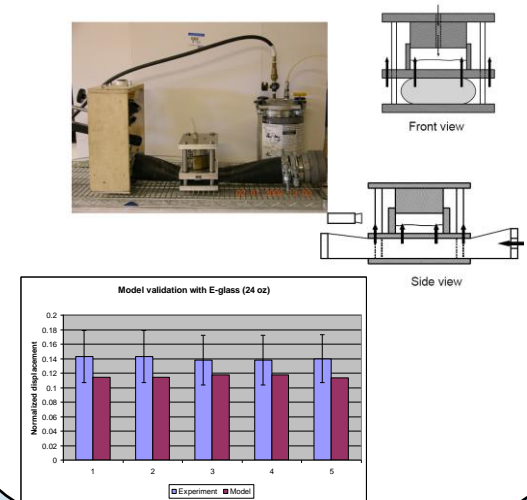
Principle of the CRTM process



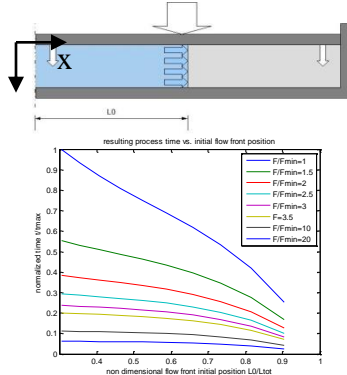
One Dimensional Analysis of Phase 2



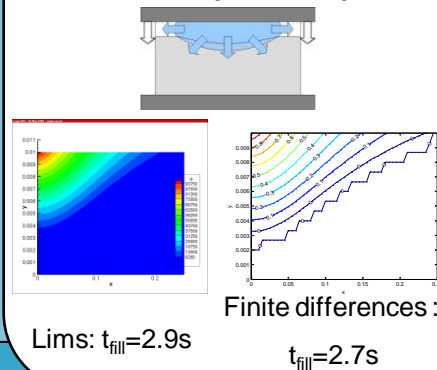
Experimental Validation



One Dimensional Analysis of Phase 3

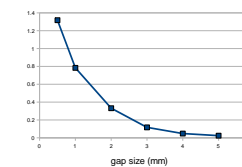


Two dimensional analysis with fabric compression: phase 1

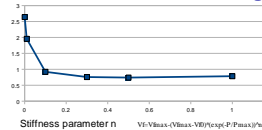


Phase 1: parametric study

Gap size influence on filling time (s):



Fabric stiffness influence on filling time (s):



Future work

- 1) Modeling phase 2 and 3 in 2D for complex geometries
- 2) Verify the results: on a larger scale experiment on more complex parts

ACKNOWLEDGEMENTS

This work is supported with funds from the National Science Foundation (NSF) in conjunction with the Department of Energy under Grant DMI-0521789